



## 2 Les Pieces La Rue Des Huriaux

St. Martin, Jersey, JE3 6AF

Pinnacle Estates is delighted to present this ground floor, granite fronted large 1-bedroom apartment situated in a quiet rural location with its own private garden featuring a 16 x 12ft Summer House and Parking spaces for 2 cars along with visitor parking.

Asking price £467,500

## 2 Les Pieces La Rue Des Huriaux

St. Martin, Jersey, JE3 6AF

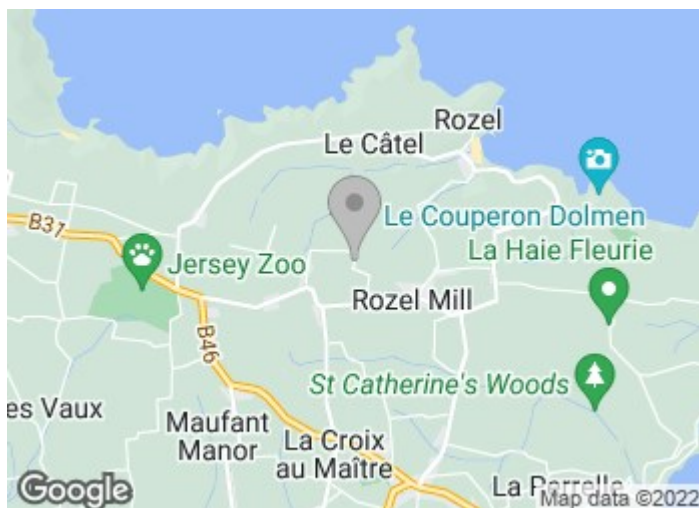


- Ground floor Apartment
- Sunny garden
- Parking for 2 vehicles plus visitor parking
- 1 double bedroom
- Summer house in the garden
- Cosy lounge with a log burner
- Pet friendly

Presented in good condition throughout, this property briefly comprises of one large double bedroom, large lounge / diner with multi-fuel fire, fully fitted separate kitchen and a bathroom. Externally there is a large private garden mostly laid to lawn with a summer house. The apartment further benefits from 2 private parking spaces and visitor parking. This apartment would make an ideal downsize or first home. Pet friendly, flying freehold, mains water, septic tank soakaway, electric heating - no service charge.

Please contact Pinnacle Estates for further details or to arrange a viewing. Find us at [Pinnacle.je](http://Pinnacle.je), email [hello@pinnacle.je](mailto:hello@pinnacle.je) or call 01534 707707

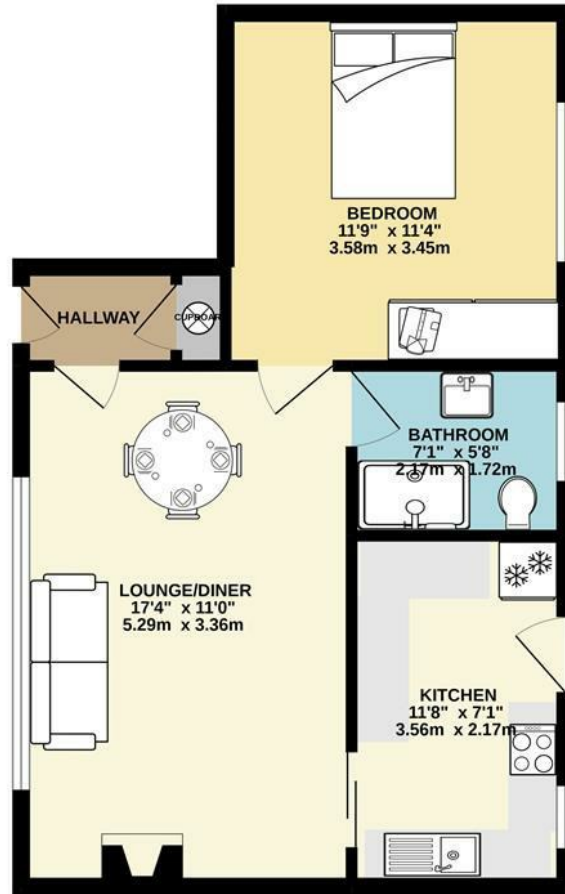
Disclaimer: Pinnacle Estates believe these details to be correct, but we do not guarantee their accuracy, nor do they form part of any contract. All photographs, measurements and floor plans referred to are provided as a guide only and should not be relied upon for any purpose. We have not undertaken a detailed survey, nor have we tested appliances, services, and fittings.





# Floor Plan

GROUND FLOOR  
466 sq.ft. (43.3 sq.m.) approx.



1 LES PIECES

TOTAL FLOOR AREA : 466 sq.ft. (43.3 sq.m.) approx.

Whilst every attempt has been made to ensure the accuracy of the floorplan contained here, measurements of doors, windows, rooms and any other items are approximate and no responsibility is taken for any error, omission or mis-statement. This plan is for illustrative purposes only and should be used as such by any prospective purchaser. The services, systems and appliances shown have not been tested and no guarantee as to their operability or efficiency can be given.  
Made with Metropix 62022

These particulars, whilst believed to be accurate are set out as a general outline only for guidance and do not constitute any part of an offer or contract. Intending purchasers should not rely on them as statements of representation of fact, but must satisfy themselves by inspection or otherwise as to their accuracy. No person in this firm's employment has the authority to make or give any representation or warranty in respect of the property.



Bespoke Service



No Tie In



Fair Fees



Giving Back

Contact Deborah on: 707707 | [hello@pinnacle.je](mailto:hello@pinnacle.je) | [www.pinnacle.je](http://www.pinnacle.je)